

VESDA ASPIRE2 – aspirating smoke detection made easy

The performance of an aspirating smoke detection system is dependent upon the design of the pipe network used to transport air back to the smoke detector.

VESDA ASPIRE2 is a Windows®-based application that aids the specification and design of pipe networks for VESDA air sampling smoke detectors. It provides the designer with tools to speed the design process and ensure optimum network performance and installation quality. ASPIRE2 also makes implementation of the design easy. With automatic generation of lists of all the components required for the project and an Installation Data Pack, the installer will have all the information they need at their fingertips.

ASPIRE2 is the latest generation of the ASPIRE application, used by VESDA system designers and installers around the world for over 15 years.

Fast pipe network design

Using the Pipe Design Wizard, you can quickly transcribe your pipe network design into ASPIRE2. Click and drag adds pipe fittings such as a pipe, elbow or sampling point as you tweak the design to suit. ASPIRE2 allows full flexibility in placement of any network components. For example, extra elbows can be introduced to direct the pipe around a ceiling beam.

Once the layout is established, you enter your performance criteria for the pipe network e.g. transport time, sensitivity etc. Using the AutoBalance function, ASPIRE2 will automatically calculate sampling hole sizes (to suit the drill bit sizes you specify). Alternatively, you can manually set the hole sizes and review the predicted system performance.

One of the great time-saving features of ASPIRE2 is the ability to save environmental design parameters for particular applications. For example, certain applications require specific transport time and sampling hole pressures or certain environments have specific conditions such as low temperatures. These parameters can be saved and used in later projects.

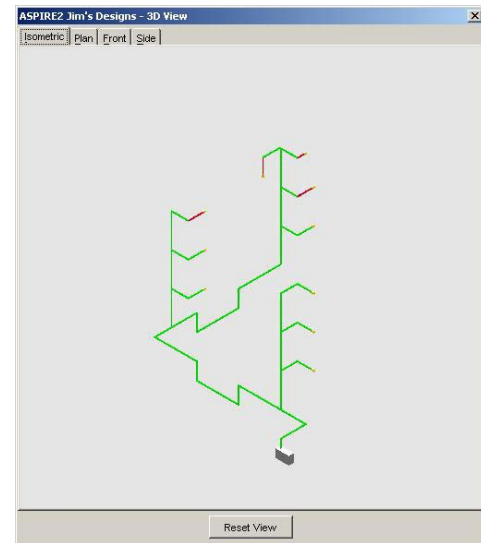
Simple handover for installation

The Installation Data Pack (IDP) is a series of reports that list the parameters, required materials and expected system performance. Data & diagrams from the IDP can be printed or cut and pasted into other programs e.g. Microsoft® Excel® for further calculations or Microsoft® Word® for client reports.

ASPIRE2 allows notes to be made on any element of the pipe design to convey design reasoning to the installer. Project-level notes can be stored with the project files. For example: an overall description of a project, project milestone dates, installation considerations or file/drawing references. This is very useful when handing the installation over to a contractor.

Need to vary the performance for different areas of a building?

The Group function in ASPIRE2 allows you to set different performance criteria for different areas of a building. For example, your design may need to cover a computer room and a manufacturing area. The computer room requires high sensitivity due to the high airflows, while the manufacturing area may only require enhanced sensitivity to accommodate background levels associated with manufacturing processes. The latest version of ASPIRE2 also supports the new European standard EN 54-20* by clearly reporting the Class of any particular design configuration.

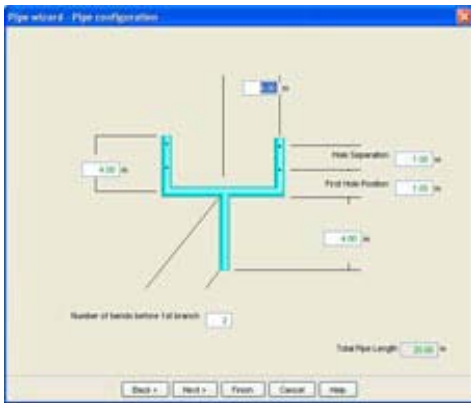


Features

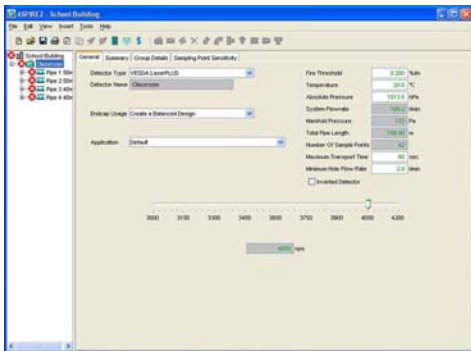
- Ensures optimum design of VESDA aspirating smoke detection pipe networks, including VESDA ECO gas detection and environmental monitoring
- Accurately models pipe network designs to environmental performance criteria
- Speeds the design process by automating adjustment of hole sizes
- Allows different detector performance requirements within one building
- Unique building constraints can be easily accommodated
- Custom design elements can be documented to guide the installation team
- 3D schematics to aid design and installation
- Professional reports and materials lists can be generated to add to client submissions
- Supports both metric and imperial measurement systems
- Compatible with other Windows®- based applications
- Set multiple detector alarm thresholds within a detector (Europe only)
- Sampling Point Sensitivity tab to confirm EN 54-20* compliance (Europe only)

* European Standard 54 – Fire Detection and Fire Alarm Systems
– Part 20: Aspirating Smoke Detectors

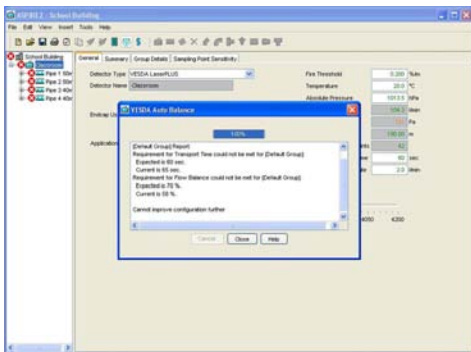
4 simple steps to an optimized pipe network design



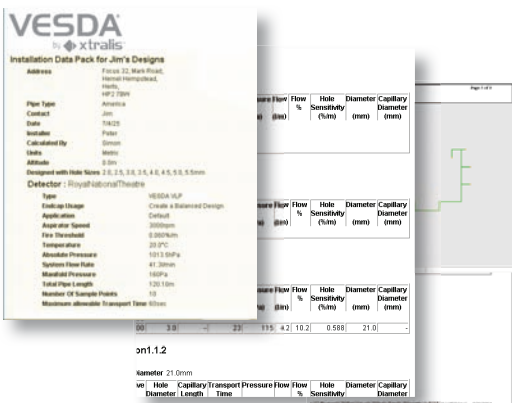
Step 1
Use the **Pipe Design Wizard** to quickly create a pipe network that is appropriate for the building or area.



Step 2
Enter the **performance criteria** you wish to achieve e.g. transport time, sensitivity etc.



Step 3
Use the **AutoBalance** function to automatically adjust the sampling hole sizes to achieve the required performance. Color-coding is used to provide feedback on the performance of the design.



Step 4
Generate the **Bill of Materials** to assist quoting and ordering for the job. Generate the **Installation Data Pack (IDP)** to aid the correct installation of the pipe network.

Specifications

Computer OS requirements

- Windows 7,
- Windows Vista™, or
- Windows XP Professional

Calculations available:

- Sampling hole diameters: Calculated diameter for each sampling hole to ensure consistent sensitivity throughout the pipe network
- Transport time for the pipe network: The time taken for a sample to travel from the furthest point on the pipe to the detector
- Transport time for every hole
- Pressure at each hole
- Flow rate at each hole (in L/min and % relative to the total flow)
- Sensitivity at each hole (% obscuration per meter)
- Flow balance (indicates the similarity of flow into each hole)
- The aggregate sensitivity of a group of holes
- EN 54-20 Class (A, B or C) - Europe only

VESDA detectors supported

- VESDA VLF
- VESDA VLC
- VESDA VLS
- VESDA VLP
- VESDA VLI
- VESDA VLX-100

Parameters

- Elevation above sea level and ambient pressure can be nominated for design calculations.
- Unlimited number of detectors in a project
- Pipe diameter and length
- Capillary diameter and length

Report options

Installation Data Pack (IDP): This includes 3D schematics, plan and elevation drawings with all the pipe lengths, fittings and required drill bits for the installer to be able to successfully install the project.

Bill of Materials (BOM): This lists the components required to install the project, the detectors and pipes needed. The bill of materials includes the relevant part numbers to order from your local Xtralis office or representative.

Ordering information

ASPIRE2 is available for download from www.xtralis.com.

www.xtralis.com

The Americas +1 781 740 2223 Asia +852 2916 8894 Australia and New Zealand +61 3 9936 7000
Continental Europe +32 56 24 19 51 UK and the Middle East +44 1442 242 330

The contents of this document are provided on an "as is" basis. No representation or warranty (either express or implied) is made as to the completeness, accuracy or reliability of the contents of this document. The manufacturer reserves the right to change designs or specifications without obligation and without further notice. Except as otherwise provided, all warranties, express or implied, including without limitation any implied warranties of merchantability and fitness for a particular purpose are expressly excluded.

This document includes registered and unregistered trademarks. All trademarks displayed are the trademarks of their respective owners. Your use of this document does not constitute or create a licence or any other right to use the name and/or trademark and/or label.

This document is subject to copyright owned by Xtralis AG ("Xtralis"). You agree not to copy, communicate to the public, adapt, distribute, transfer, sell, modify or publish any contents of this document without the express prior written consent of Xtralis.