

# VESDA LCD Programmer



## Description

The Programmer Module allows direct access to all VESDAnet devices on an VESDA smoke detection system. It allows configuration and status reporting of detectors, displays and interfaces and is required when installing, commissioning and maintaining a VESDA network. By incorporating a user friendly menu, navigation through the comprehensive features of VESDAnet is convenient and simple.

The programmer module is available as a hand-held device (with included DB15 serial cable) or can be mounted into a VESDA VLP or VESDA VLS detector, a remote mounting box or a 19 inch sub rack.

The two rows of large push buttons enable the user to log ON and navigate through the menu trees to the various command and parameter setting functions. The top row of keys are called "Soft Keys" and are assigned programming options appropriate to the screen being viewed.

Some of the parameters that can be accessed via the programmer include device status reporting, zone number and name allocation, flow normalisation, alarm threshold setting (day, night, weekend), initiation of AutoLearn, wiring order, relay testing and event log review.

Up to 14 assigned Users or Administrators with an individual 4 digit Personal Identification Number (PIN), and one Distributor, can log onto a VESDAnet system under one of three levels of access which are password protected:

- User (USR) is only able to view parameters, check status, alarms and reset the system.
- Administrator (ADM) has access to most commands and programming parameters.
- Distributor (DST) is the topmost level and has unlimited access to all commands and parameters in the system.
- Lost PIN numbers can be overcome by obtaining a once only pass number from your Xtralis VESDA dealer.

The programmer automatically logs OFF when not in use for more than 10 minutes. The user is prompted with a beeping sound at 1 minute and at 15 seconds before log OFF. Any key may be pressed to cancel the automatic log OFF process.

## Programming Functions

- System configuration
- Detector zone configuration and set up
- Detector zone control
- System status
- Smoke Threshold and Detector Sensitivity settings
- Event Log interrogation
- Commissioning and testing
- Set date and time
- Referencing
- AutoLearn™
- Passwords and user Configuration
- System fault diagnostic

## Features

- User friendly menu system
- Supports multiple languages
- Single point access to entire VESDAnet system
- Alarm and fault simulation
- Shows wiring order
- Locates communications failures
- Password security
- Hand held or remote mounting
- Automatic Logoff when inactive
- Backlit LCD screen

## Listings/Approvals

- UL
- ULC
- FM
- LPCB
- VdS
- CFE
- ActivFire
- AFNOR

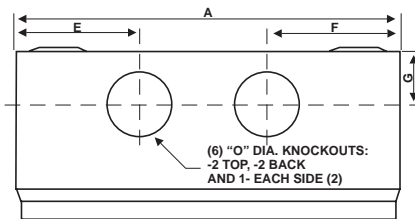
# VESDA LCD Programmer

## Specifications

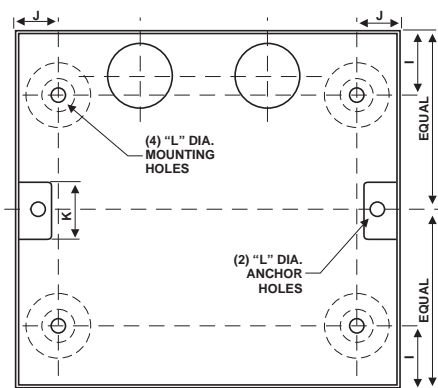
**Supply Voltage:** 18 to 30 VDC

		Module	Hand Held	Remote
Power (W) @ 24 VDC	Min	1.08 W	1.68	1.2
	Max	1.44 W		
Current (mA) @ 24 VDC	Min	45 mA	70 mA	50 mA
	Max	60 mA		
Dimensions (WHD)	mm	98 x 130 x 30	105 x 135 x 60	140 x 150 x 90
	in	3.9 x 5.1 x 1.21	4.1 x 5.3 x 2.4	5.5 x 5.9 x 3.5
Connections		Terminal connector to Head Processor Card or to expansion connector on another Xtralis VESDA device	15 pin D-type connector. VESDAnet cable required to connect to detector or remote VESDAnet socket	RS485 VESDAnet field wiring to Screw terminal blocks (0.2–2.5 mm <sup>2</sup> , 30–12 AWG)

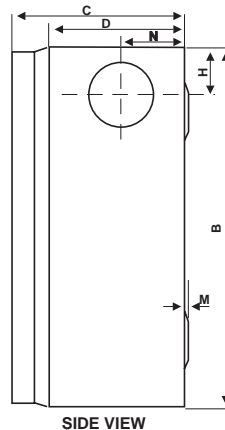
## Remote Mounting Box



TOP VIEW



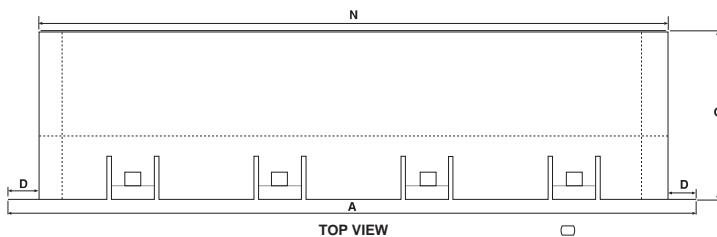
FRONT VIEW



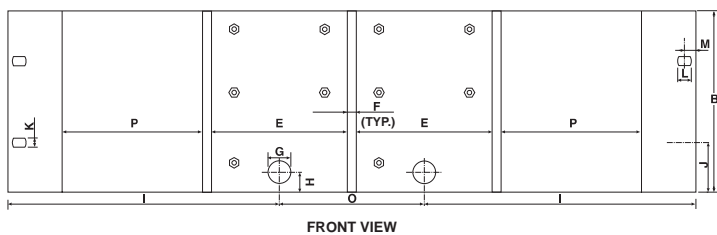
SIDE VIEW

Dimensions	
	mm in
A	140 5.5
B	150 5.9
C	70 2.75
D	60 2.36
E	44.5 1.75
F	48 1.9
G	23 0.9
H	25 0.98
I	27.5 1.1
J	16.5 0.65
K	25 0.98
L	6.4 0.25
M	1.6 0.06
N	23 0.91
O	26 1.0

## 19" Sub Rack



TOP VIEW



FRONT VIEW

Dimensions	
	mm in
A	482 19
B	128 5
C	120 4.75
D	21 0.82
E	97.2 3.82
F	6.4 0.25
G	16 0.62
H	14 0.56
I	190 7.50
J	36 1.4
K	7 0.28
L	10 0.39
M	8 0.31
N	440 17.37
O	102 4
P	98.5 4

[www.xtralis.com](http://www.xtralis.com)

**The Americas** +1 781 740 2223 **Asia** +852 2916 8894 **Australia and New Zealand** +61 3 9936 7000  
**Continental Europe** +32 56 24 19 51 **UK and the Middle East** +44 1442 242 330

The contents of this document are provided on an "as is" basis. No representation or warranty (either express or implied) is made as to the completeness, accuracy or reliability of the contents of this document. The manufacturer reserves the right to change designs or specifications without obligation and without further notice. Except as otherwise provided, all warranties, express or implied, including without limitation any implied warranties of merchantability and fitness for a particular purpose are expressly excluded.

This document includes registered and unregistered trademarks. All trademarks displayed are the trademarks of their respective owners. Your use of this document does not constitute or create a licence or any other right to use the name and/or trademark and/or label.

This document is subject to copyright owned by Xtralis AG ("Xtralis"). You agree not to copy, communicate to the public, adapt, distribute, transfer, sell, modify or publish any contents of this document without the express prior written consent of Xtralis.

Doc. no. 11956\_10

Part: 17875

## Screen Display Size:

70 mm x 37 mm (2.75 in x 1.45 in)  
 Full Graphic display  
 Large characters  
 8 lines, 21 characters per line  
 Adjustable backlight screen with contrast control

## Inactivity Time Out:

10 minutes (Defaults to log on screen)  
 Beeps at 1 minute and then 15 seconds before Logoff

## Push Button Keys:

2 Rows x 4 keys, each 19 mm x 12 mm  
 (0.75 in x 0.50 in)

## Security Access:

3 characters User ID  
 4 digit Personal Identification Number (PIN) per User

## Number of User Levels:

10 USR  
 3 ADM  
 1 DST

## Default ID:

USR = User (Operator level)  
 ADM = Administrator (Access most functions)  
 DST = VESDA Distributor (Access all functions)

## Operating Conditions:

Tested to: -10°C–55°C (14°F–131°F)  
 Recommended Detector Ambient: 0°C–39°C  
 (32°–103°F)  
 Humidity: 10%–95% RH, non-condensing

## System Functions Accessed:

Status of software version  
 Descriptive Alarms & Faults  
 Smoke & Flow readings  
 Push-Button lockout  
 Display name (21 chars)  
 Alarm Thresholds (Alert, Action, Fire 1 & Fire 2)  
 Alarms delays (0–60 seconds)  
 Day/Night/Weekend/Holiday Options  
 Event Log (up to 18,000 events)  
 Zone number and name (21 chars)  
 Pipes in use (pipe 1 to 4)  
 Aspirator Speed & Flow control  
 Confirmation of filter change  
 Relay configuration  
 Referencing  
 Auto Learn™

## Addressed Devices:

250 VESDA devices maximum

## VESDA addressed Devices:

VESDA VLP Detectors & Displays  
 VESDA VLS Detectors & Displays  
 VESDA VLC Detectors & Displays  
 VESDA VLF  
 with Vnet card Detectors & Displays  
 HLI (High Level Interface)  
 Relay modules Remote Relays

## Ordering Information:

Remote Programmer VRT-100  
 Recessed Mounting  
 Kit (Optional) VSP-012  
 Hand-Held Programmer VHH-100  
 19 inch Sub Rack  
 Configuration contact Xtralis

**VESDA**<sup>®</sup>  
 by **xtralis**<sup>™</sup>